

Inspiring Museums And Galleries  
in Excellence

# IMAGinE

*awards 2020*

**Museums  
& Galleries  
of NSW**

*Museums & Galleries of NSW acknowledges the Gadigal people of the Eora Nation and all the other Traditional Custodians of the lands on which we live and work.*

*We pay respect to them as First Nations people with continuing connection to land, place, waters and community.*

## Minister's Foreword



This year has been challenging for us all and as it comes to an end it's appropriate we celebrate the achievements, and acknowledge the challenges, faced by the museums, galleries and Aboriginal centres across our state. The IMAGinE Awards, an initiative of Museums & Galleries of NSW, does just that.

The awards have been redesigned to celebrate the resilience, innovation and creativity of these organisations in the face of hardship and unexpected circumstances during this daunting time.

*The Imagination Award*, a new category for this year, is for innovative concepts which use a museum or gallery in new ways. It also highlights projects that appear in unexpected spaces or landmark sites, or reimagined ideas which involve and inspire local communities, utilise technology to counteract physical isolation or connect with new audiences.

As well, there is the *Innovation & Resilience Award* which recognises the outstanding efforts of museums and galleries during hardship.

The IMAGinE Awards also recognise the people who work in museums and galleries across NSW and the contributions they make. IMAGinE celebrates all institutions and pays particular homage to organisations run by volunteers, with limited budgets and minimal resources.

As I've said before, these awards offer a unique opportunity for museums and galleries in NSW to advocate with pride, promote achievements and raise their profile within the sector and broader community. Congratulations to all nominees!

**The Hon. Don Harwin MLC**

*Minister for the Arts*

# *Innovation & Resilience*

The Innovation & Resilience award acknowledges projects that have taken place between 1 July 2019 and 30 June 2020. This award recognises the outstanding efforts of museums and galleries during hardship and celebrates excellence and innovation in exhibition practice, resilience building projects, and engagement programs.

# Galleries

*volunteer or up to 2 paid staff*



## Bega Valley Regional Gallery *BVRG at HOME*

BVRG at Home was launched immediately following the closure of the gallery to the public due to COVID-19. BVRG commissioned artists such as Liam Benson, Rosie Deacon and Shivanjani Lal to produce online workshops and studio tours, making art accessible to the public via social media platforms and the gallery website.



## The Lock-Up

*Dancing with the Dead at The Lock-Up*

Named after the infamous Madagascan/Malagasy ritual of Famadihana, this curated group exhibition illuminated the convergence of memory and corporeality. Presented in partnership with Antidote Projects, the show brought together 10 artists and included two specially commissioned works.



## Pari *10 Degrees Hotter*

Pari's first exhibition *10 Degrees Hotter* used the notion of heat to explore contemporary, historical and political concerns relevant to Western Sydney. The exhibition brought together 10 artists across generations and with a connection to the area.



## Pari *Gallery Warming*

Pari's inaugural event *Gallery Warming* brought together community leaders alongside contemporary artists in an afternoon of ceremonies and performances to welcome, ask permission, give thanks, and bring fortune.



## Pari *Mixed Business*

In this exhibition, Pari invoked the mixed business as a mode of operation for multiplicity and exchange: bringing together works by some of the extended Pari family who volunteered their time to build, paint and run the space.

Inspiring Museums And Galleries In Excellence



## Galleries

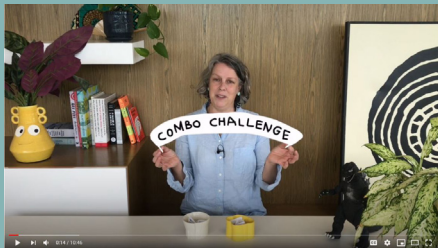
*3-10 paid staff*



### Australian Design Centre

#### *Object 150: Commission a local maker*

The effects of COVID-19 hit makers and designers particularly hard with galleries, shops and markets closed or cancelled. In response to the creative and financial impact of this, ADC initiated *Object 150* to support local makers. People were invited to commission creatives to make a unique work to the value of \$150 with all proceeds going to the maker.



### Bathurst Regional Art Gallery

#### *Ar+Collect*

In May 2020, BRAG leveraged the COVID-19 shut down period to embark on an ambitious collection project designed to give audiences unprecedented behind-the-scenes access. Staff displayed, catalogued, photographed, researched and condition reported 980 paintings in preparation for relocation to a new purpose build collections facility in 2021.

### Blue Mountains Cultural Centre

#### *Virtual InSight*

Launched in response to the Centre's pending closure due to COVID-19, *Virtual InSight* quickly became a popular online program. The program focused on art making activities; staff collection insights; studio tours and workshops with Blue Mountains artists; online exhibitions; and a selection of fun and quirky personal contributions from staff and volunteers.



### Bathurst Regional Art Gallery

#### *Void Education Symposium*

Held in conjunction with the *Void* touring exhibition developed in partnership with UTS Gallery and M&G NSW, the *Void* Education Symposium brought together Wiradyuri Knowledge Holders and Traditional Owners; curator Emily McDaniel; *Void* artists; education and First Nations staff from each of the eight touring venues; community members; and the regional museum and gallery sector. The range of activities - including talks, panel discussions and workshops - aimed to give participants a base for creating culturally safe, authentic learning experiences at their respective venues.





# Galleries

## 3-10 paid staff



### ▲ Coffs Harbour Regional Gallery

#### *The Overwintering Project*

The *Overwintering Project* brought together a national environmental art project highlighting the unique nature of migratory shorebird habitats with distinctive, participatory local components. Schools; TAFE; local artists and authors; volunteers; National Parks and Wildlife Service; birdwatchers; and the Gumbayngirr community were all involved.



### ▲ Griffith Regional Art Gallery

#### *Each for Equal*

The *Each for Equal* exhibition featured eight short YouTube videos highlighting the artwork and practices of Riverina-based female artists. The exhibition coincided with International Women's Day and the videos - which were presented one uncertain week after the other - were very welcome by the Gallery's online audience during COVID-19 lockdown.



### ▲ Goulburn Regional Art Gallery

#### *Sidney McMahon, 'Of hope and longing'*

Taking inspiration from Garth Brooks' Australian rock alter ego Chris Gaines', Dolly Parton's lyricism and Keith Urban's Instagram account, queer artist Sidney McMahon appropriates the aesthetics and materiality of country music to unpack the growth, stoicism, longing and hope the genre nurtured throughout their childhood in rural Queensland. For this exhibition, McMahon additionally ran workshops and online performances, connecting with the local Goulburn community who were also invited to submit drawings, videos and photos to inform the work and be displayed.



### ◀ Hurstville Museum & Gallery

#### *Artbomb: connect + create*

*Artbomb: connect + create* was a series of works made by local creatives, many of which were created in situ at the gallery with contributions from visitors. *Artbomb* was an opportunity for people to connect with local artists and view their practice in person. This slow release explosion of creativity saw artists and the community respond to their life in lockdown through art, writing and performance.

### ▲ Museum of Art and Culture Lake Macquarie (yapang)

#### *MAC building redevelopment, rebrand and yapang program*

Formerly known as the Lake Macquarie City Art Gallery, this momentous project encompassed a building redevelopment, rebrand and a reimagining of what the Museum could be to the local community and industry. The project extended the Museum's capacity as an art and cultural venue through increasing the ability to stage multiple exhibitions alongside related projects and programs, as well as the ability to generate income. A key element is also a dedicated Aboriginal art program, yapang, in partnership with the Aboriginal Reference Group.

## Galleries

3-10 paid staff



### Leo Kelly Blacktown Arts Centre *Blacktown Arts Open Studio*

*Open Studio* began as in-person workshops for local creatives at the Leo Kelly Blacktown Arts Centre. When COVID-19 hit, the group was moved onto Facebook, where it grew by 500% and reflected the cultural and socio-economic diversity of the community. Members created over 200 new artworks during isolation, culminating in a digital book and physical exhibition.



### Mosman Art Gallery *Hunters & Collectors – Supporting the Mosman Art Collection*

*Hunters & Collectors* was a fundraising campaign supporting the Mosman Art Collection, home of Australia's most treasured Australian Impressionist artworks. The campaign centred on the personal connections made through institutional collections and focused on expanding community and donor networks; Cultural Gifts; fundraising; an exhibition; and education and public programs. The campaign funds directly supported collection development and conservation.

### ◀ Museum of Art and Culture Lake Macquarie (yapang) *yapang program: Consultation, Governance and Programming Framework*

*yapang* is a dedicated program of exhibitions, collection strategies, events and programs developed with the Aboriginal Reference Group and guided by the *yapang Consultation, Governance and Programming Framework* to engage First People's artists and connect wider audiences with First People's arts programming. It was launched with *wiyelliko* as part of MAC's November reopening.



### New England Regional Art Museum *Ezidi Women's Empowerment Program*

The *Ezidi Women's Empowerment Program* provided social and cultural activities for women from the recently settled Ezidi refugee community in Armidale to welcome them into the community and to support the development of intercultural social interaction.



### New England Regional Art Museum *Winter Blooming Festival*

*Winter Blooming* was a festival that celebrated Indigenous, multicultural and LGBTIQ+ arts, culture, communities and allies. It encompassed a keynote by artist Ms Saffa; workshops; and a social event including drag shows, spoken word performances and open mic sessions.



### Newcastle Art Gallery *HOMEWARD BOUND: the art and life of Tom Gleghorn*

*HOMEWARD BOUND: the art and life of Tom Gleghorn* is the first major survey of senior abstract artist Tom Gleghorn OAM. Closed to the public due to COVID-19, innovative online programming was developed to ensure that this important exhibition was available for audiences to experience, both remotely and in person.



## Galleries

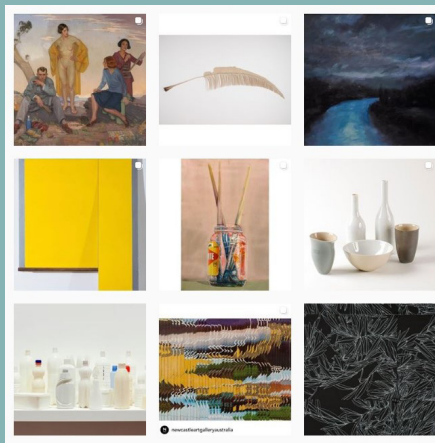
3-10 paid staff



### Orange Regional Gallery

#### *Regenerate*

*Regenerate* was a creative exploration by local primary school students of how Australia's bushland responds to fire. The project was initiated in January 2020 as a partnership between Orange Regional Gallery, Orange Regional Museum and the SPARKE Learning Network of local public primary schools (including over 2,500 students across 14 schools).



### Newcastle Art Gallery

#### *On Stillness*

*On Stillness* is an evolving online exhibition presented across social media accounts of public galleries. Initiated through a partnership between Newcastle Art Gallery and the National Art School Gallery, the exhibition encouraged institutions to engage audiences through a collective response to the experience of stillness imposed by COVID-19.



### S.H. Ervin Gallery

#### *River on The Brink: inside the Murray-Darling Basin*

This timely exhibition focused on the most pressing environmental crisis of our time: the ongoing devastation of the Murray-Darling Basin. *River on the Brink* was a creative response by 24 Indigenous and non-Indigenous artists. Led by Barkindji artists, the compelling images reinforce the need to act and save our vital waterways.



### Parramatta Artists' Studios

#### *Movers and Makers Online 2020*

*Movers and Makers* is a PAS annual symposium of critical discussions and networking opportunities for artists aimed at increasing industry accessibility and sustainable artists' careers. *Movers and Makers 2020*, presented online in response to COVID-19, included panel discussions; the networking initiative *One Plus One*; artwork commissions; online resources; and virtual tours.



## Galleries

*3-10 paid staff*



### Tamworth Regional Gallery

*Rowen Matthews: Land is Emotional –  
Online Exhibition and Virtual Plein Air*

Regional artist Dr Rowan Matthews spent over two years developing this exhibition, which was due to open during the week COVID-19 lockdown commenced. Within three weeks, the Gallery (in collaboration with the Tamworth Library Innovation Studio) was able to create an online version of the exhibition using open source platform Poly. The exhibition had over 2,100 visitors and was accompanied by an online workshop with the artist.

### Tweed Regional Gallery & Margaret Olley Art Centre

*Gallery At Home – COVID-19 online engagement program*

Made in response to COVID-19 closure, the *Gallery At Home* initiative offered an invaluable opportunity to support artists and develop new online audiences through virtual programs designed to inspire, engage and stimulate a deeper connection with the Gallery's exhibition program and specifically the Margaret Olley Art Centre.



### UNSW Galleries

*Friendship as a Way of Life*

*Friendship as a Way of Life* is a landmark exhibition exploring queer kinship. In response to COVID-19, UNSW Galleries pivoted the project to be presented as both an onsite and online experience. The digital initiatives expanded programming beyond the gallery, offering an ambitious program of talks, events and commissions.





## Galleries

11+ paid staff



### Art Gallery of New South Wales

*Faboriginal: Australia's deadliest art game show*

*Faboriginal* is an eight-episode Indigenous art quiz show co-created by the Art Gallery of NSW and comedian Steven Oliver. A co-production between the Art Gallery of NSW, NITV, and Noble Savage Pictures, *Faboriginal* was filmed live at the Gallery and televised weekly on NITV, then available through SBS On Demand.



### Art Gallery of New South Wales ▶

*Together In Art*

On 23 March 2020, the Art Gallery of New South Wales closed its doors for the first time in 101 years due to the COVID-19 pandemic. Within two weeks, the new *Together In Art* social project was launched across the Gallery's digital platforms to support and connect with their audience and community during the challenging time. The program included online exhibitions with newly-commissioned works; performances by musicians and artists filmed in the empty Gallery; and behind-the-scenes insights.



### Biennale of Sydney

*22nd Biennale of Sydney (NIRIN)*

Entitled NIRIN, meaning 'edge' in Wiradjuri, the 22nd Biennale of Sydney prioritised First Nations artists and perspectives. Exhibitions were hosted across six major venues and featured artists from Australia and across the globe. An extensive offering of public programs, entitled NIRIN WIR ('edge of the sky'), was also produced in and online.



### Museum of Contemporary Art Australia

*Better together with Pip and Merindah!*

*Better together with Pip and Merindah!* was a free online program with five activities aimed to inspire kids aged 4–12 to engage with the 22nd Biennale of Sydney exhibition at the MCA. In each activity, kids learned a Wiradjuri word connected to the seven themes of NIRIN and viewed artworks online.



## Galleries

*11+ paid staff*



### **Campbelltown Arts Centre** *Marama Dina*

*Marama Dina* was a series of community engagement workshops and an exhibition developed and led by The Veiqia Project that took over C-A-C between 17 August – 13 October 2019. The project encouraged cross-generational discussions focussed upon cultural rejuvenation, preservation and celebration amongst iTaukei (Indigenous Fijian) women from Western Sydney and beyond.



### **Casula Powerhouse Arts Centre** *CPAC Digital Program*

A digital offering in March (and now ongoing) of programs including workshops; backstage tours; 3D Virtual tours; artist interviews; activity sheets; WOW festival 'at home'; online Italian film screenings; storytime, cooking tips and tricks; gardening tutorials; and *Live Iso Sessions* of CPAC Youth performing original music.

## Museums

*volunteer or up to 2 paid staff*



### **Armidale Folk Museum** *Stories Connect*

*Stories Connect* was part of the New England Writer's Centre *Stories Connect* project. The museum hosted three Story Starter sessions that focussed on encouraging creative expression and making connections between newly-resettled Ezidi refugee families and other members of the Armidale community, through the sharing and creation of stories, pictures and music.



### **Australian Country Music Foundation** *A Partnership between Tamworth Regional Council and the Australian Country Music Foundation*

The stories told by the Australian Country Music Hall of Fame (ACMF) contribute to Tamworth's collective memory, history and tourism potential. Through an authentic, collaborative partnership with Tamworth Regional Council (TRC), a new strategic plan was developed which will ensure the future longevity of the museum.

### **Glen Innes & District Historical Society Inc.**

#### *Jeannie Ross Fraser Memorial Medical Wing*

This project re-established the former hospital's operating theatre, in combination with the refurbishment and development of part of the museum's northern wing as a medical services exhibit. This revamped and expanded display was re-dedicated in memoriam to former nurse and long-term Historical Society stalwart, Jeannie Ross Fraser.



# Museums

*volunteer or up to 2 paid staff*



## Griffith Pioneer Park Museum

*From the Collection*

In response to the COVID lockdown, which caused the closure of the Museum for 10 weeks, the museum's curator was eager to develop a project that would bring the museum to audiences at home. Videos were produced that focused on two topically significant items in the Museum's collection, which related to Griffith's history with pandemics.



## Iluka History Group Inc.

*Fishing and Fond Memories*

Due to the bushfires which badly affected the local area and COVID-19 restrictions, this project set out to re-engage the community while the museum was forced to close. It involved digitising existing oral histories and the development of audio visual content for both the Iluka History Group website and Facebook page.



## Leeton Museum and Gallery

*Water by Design – the Leeton Water Story*

This project involved the renovation of a deteriorated State Heritage listed building space and the restoration of its Art Deco features, to create a new museum. This provided a canvas for a permanent exhibition, *Water by Design – the Leeton Water Story*, which includes HVAC and gallery lighting. The museum also includes a theatre, café, and event space for the community.



## Mount Victoria Museum

*Birdland*

For this inaugural exhibition, four mid-career artists were commissioned to develop works in response to the ornithological specimens held in the museum's collection. The specimens are testimony to the fragility of avian species, particularly those now endangered or extinct, sought for their plumage at the turn of the 20th century.



## New Italy Museum

*Museum Upgrade 2020*

This project completes the New Italy Museum upgrade (commenced in 2016). The displays feature important stories including that of the community doctor; the school; the silk industry; creative ingenuity; and the importance of faith in the New Italy settlement.



## Nambucca Headland Museum

*Pioneers in Print*

The *Pioneers in Print* project set out to expand the museum's audience by leveraging research from archives to develop a series of newspaper articles, radio programs and social media content. The project had the added advantage of strengthening the museum's research and collection records.



# Museums

*volunteer or up to 2 paid staff*



## ▲ Port of Yamba Historical Society *Yaegl Cultural Garden*

Created in close collaboration with local Indigenous communities, artists and gardeners over six months, the Yaegl Cultural Garden transformed the entrance of the Museum into a grand display of local stories and culture. The Garden incorporates a mosaic featuring two local totems (dolphin and dingo); six Language Poles; and three Yarning Circles. The Garden now sets the tone and focus on telling stories about the first people in Yamba.

## NSW Lancers Memorial Museum ► Incorporated

*Using social media to engage with the public during COVID shutdown*

This project used social media in innovative ways to maintain and enhance the Museum's public engagement. This was done during a time when the Museum was not only closed under the Government's COVID-19 regulations but also due to the Army's closure of Lancer Barracks, where the Museum is located.



## ▲ Port of Yamba Historical Society *Enhancement of Yamba Museum Precinct*

Following the development of the new Yaegl Cultural Garden - which included a new design of the Museum's entrance, in consultation with the Yaegl community - a new Function Room was created, including facilities for visitors with disabilities. In tandem with the Garden, the Function Room has increased the accessibility of the Museum and will enable Yaegl community celebrations and meetings, alongside other group gatherings, to be held.



## ▲ Prince Henry Hospital Trained Nurses Association *Bravery, Bandages and Bedpans*

The Prince Henry Hospital Trained Nurses set out to celebrate the International Year of the Nurse and Midwife (IYON) and the 200 year anniversary of the birth of Florence Nightingale by completely revamping the North Ward end of their museum. This included an exhibition depicting the pandemics, disasters and changes throughout the life of The Coast/Prince Henry Hospital from 1881 through to 2003.

## ◀ Tumbarumba Historical Society *A 21km Linear Museum*

After many years of local advocacy, NSW Government Regional Development funds and land transfer enabled the construction of the Tumbarumba-Rosewood Rail Trail. Opened in April 2020, the trail has many historical displays, including two heritage listed buildings from the 1870s. Extensive reconstruction and refurbishment went into developing the 21km trail, which has enlivened the community and made the area a destination for cyclists, in particular.



## Museums

*volunteer or up to 2 paid staff*



### The City of Greater Lithgow Mining Museum

*Focus on brighter futures*

In response to the challenges of the Gospers Mountain Bushfire and the COVID-19 pandemic, we have utilised the strength of a new vision and mission developed in November 2019 to create programs and projects that engage our community and volunteers. We took the opportunity of bushfire recovery to provide practical outlets for volunteers, and have used the opportunity of COVID-19 to undertake major works and maintenance programs on our site.

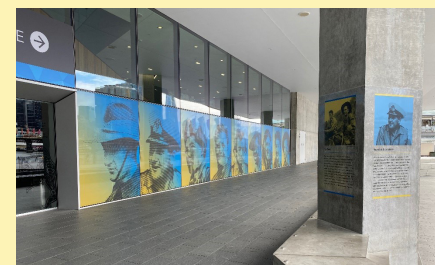
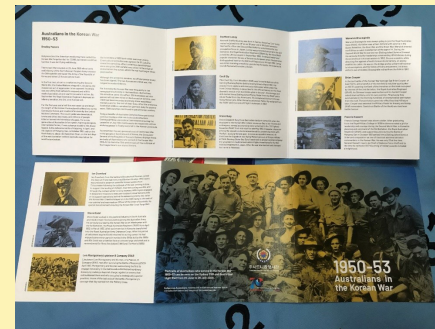
## Museums

*3-10 paid staff*



### Bathurst Rail Museum *New Museum*

The Bathurst Rail Museum project provides a world-class museum that tells the important story of the development of rail for Bathurst and NSW through the lives of everyday people. The museum caters for visitors of all ages and interests and provides a community hub for the redeveloped rail precinct.



### ◀ Anzac Memorial, Hyde Park, Sydney *Australians in the Korean War 1950-53*

As a statement of thanks to the people of Australia, the Consul General of Korea in Sydney and his staff funded this exhibition, *Australians in the Korean War 1950-53*. The exhibition focuses on the veterans, whose young faces are captured in portraits taken at the time.



## Museums

### 3-10 paid staff



#### ▲ Fairfield City Museum & Gallery

##### *Treasures from Home*

*Treasures from Home* explores the personal stories of local residents who arrived in Australia as migrants or refugees and showcases the belongings they brought with them. These treasured keepsakes bring back memories of a life left behind, connecting people to a place they once called home.



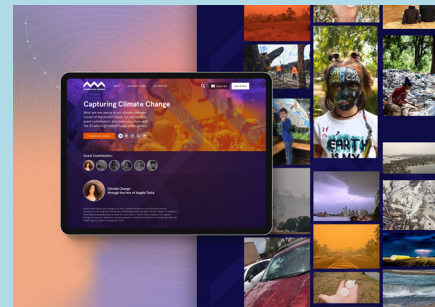
#### ◀ Norfolk Island Museum

##### *Commissariat Store*

This project aimed to modernise displays at the Commissariat Store Museum to enable a clear distinction between the Island's separate settlements and to integrate personal stories. A secondary goal was to also promote engagement between visitors and the local community through activity stations and reading corners.

## Museums

### 11+ paid staff



#### ▲ Australian Museum

##### *Capturing Climate Change*

*Capturing Climate Change* was an innovative online photographic exhibition that shares views and words from people in Australia about the impacts and solutions to climate change. Commissioned photographers and members of the general public uploaded insights into their experiences, visions and hopes for navigating the climate crisis.



#### ▲ Australian National Maritime Museum

##### *Elysium Arctic*

*Elysium Arctic* is an external exhibition at ANMM, consisting of a series of cylinders displaying a photographic collection from artists who travelled to the Arctic in 2015. The photographs were presented wrapped around 30 PVC cylinders that enabled visitors to explore and wander amongst them during both day and night.

#### ► Chau Chak Wing Museum

##### *Object Matters* podcast

*Object Matters* is a monthly podcast launched during the construction of the Museum and at the height of the COVID-19 crisis, in which expert guests were interviewed in a conversational setting about an object from the museum's collection that has meaning for them. Hosted by Dr Craig Barker, the podcasts explored the emotional or intellectual connections people have with art, artefacts and specimens.



# Museums

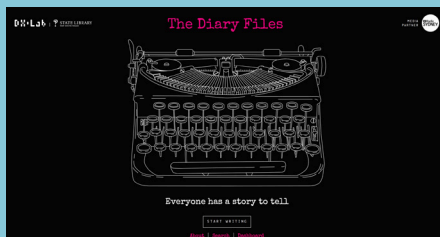
11+ paid staff



## State Library of NSW

*Living Language: Country, Culture, Community exhibition*

*Living Language* was developed to coincide with the UNESCO International Year of Indigenous Languages and celebrated some of the extraordinary language revitalisation work taking place throughout NSW. The exhibition was guided by a reference group of Elders, leaders and language custodians representing nine communities from across NSW and the ACT.



## State Library of NSW - DX Lab

*The Diary Files*

In May 2020 the DX Lab launched *The Diary Files*, an online community-generated diary to which all Australians were invited to contribute during COVID-19. It's a platform for users to write 300 words or less on anything that they wished to write about which the Library is collecting for future researches.



## Sydney Jewish Museum

*Online Learning Project*

The Sydney Jewish Museum *Online Learning Project* is a five-armed online education offering for students and adults. The five arms are (1) virtual school excursions; (2) HSC Core In-Depth webinars; (3) an online teacher resource bank; (4) NESA approved teacher training webinars; and (5) online adult education webinars.



## Sydney Living Museums

*Convict Love Tokens Live Virtual Event*

Presented from the newly renovated Hyde Park Barracks via live video conference, this event provided access for over 11,000 students to a personal lived learning experience of life as a convict over 200 years ago, as they learnt about and made their very own convict love token.

## Sydney Living Museums

*ON THE MOVE*

*ON THE MOVE* is a highly interactive family exhibition that takes the audience on a journey of exploration around Australia discovering fascinating facts about different modes of transport and the amazing people behind them. From pioneering prototypes to supersonic vehicles, the exhibition celebrates the way transport captures our imagination.



## Sydney Living Museums

*Songs of Home*

The *Songs of Home* exhibition at the Museum of Sydney revealed the vibrant and little-known musical world of early colonial NSW through recordings of historic songs, rare objects, new works by contemporary First Peoples composers, and the powerful stories of people who composed, enjoyed and played music in the home.



# *Imagination*

The Imagination Award is a new initiative, aimed to reward innovative concepts that museums and galleries can use to activate unexpected spaces, reimagine landmark sites, inspire local communities or utilise technology.

Projects should plan to take place between 1 December 2020 and 30 June 2021 and the prize will consist of a \$3,000 cash grant to make these ideas a reality.



# Imagination Category

## Australian Design Centre

### *Contemporary Jewellery Activation*

The ADC on Tour exhibition *Made/Worn: Australian Contemporary Jewellery* will re-launch in Sydney in May 2021. To give Sydney audiences a fun, interactive opportunity to engage with the exhibition, contemporary jewellers Melinda Young and Lauren Simeoni will create a city-wide treasure hunt. Audiences will follow clues on social media to find 100 wearable pins made by the artists in the exhibition that will be planted across the city.

## Australian Fossil & Mineral Museum

### *Virtually Dinosaurs*

The Australian Fossil & Mineral Museum proposes to develop an augmented reality app to help drive visitation to the museum and provide additional educational opportunities for visitors. If successful, the app will be expanded throughout AFMM and other Museums Bathurst venues, such as the National Motor Racing Museum, Chifley Home and Bathurst Rail Museum.

## Bathurst Regional Art Gallery

### *BRAG Art Heist*

BRAG Art Heist is a digital display of artworks developed through commissioning a local artist working with a community group. The artworks will be displayed for two weeks on existing digital screens in a Bathurst Shopping centre usually reserved for advertising.

## Blue Mountains City Art Gallery

### *Collection in your pocket*

*Collection in your pocket (CIYP)* is a private moment to pause, take a breath and enjoy a single artwork. Distributed via SMS, CIYP gives subscribers an intimate view into a selection of works from the Blue Mountains Cultural Centre Collection. Descriptive text, images and audio/video files relating to five selected works will be rolled out over five weeks to subscribers.

## Coffs Harbour Regional Gallery

### *Culture Hub*

*Culture Hub* is a temporary, experimental shopfront space hosting exhibitions and associated programs to disrupt, animate and engage with the everyday. Including takeovers for, about and by the community and collaborations to facilitate an artist-lead recovery, it uses arts and cultural initiatives to connect local people, support their resilience and rebuild community.

## Fairfield City Museum & Gallery

### *Living the Past Digital Project*

The *Living the Past* education program is an interactive experience that has been severely impacted by COVID-19. FCMG proposes to create digital content as an alternate experience for schools in remote regions or those who cannot physically participate. The project's outcome will be an alternative digital resource.



## Douglas Vale Historic Homestead and Vineyard

### *Play Performance in Conjunction with Port Macquarie Bicentennial*

Our next Open Day is also Bicentennial Day. As part of the celebration, the homestead proposes the performance of a play titled *Governor Lachlan Macquarie's Visit to Port Macquarie* by Kay Morrison based on a novel by Richard Grimmond titled *Port Macquarie 1821*.

## Griffith Pioneer Park Museum

### *Vintage Voices*

#### *– Tune in to Griffith's History*

The Museum is partnering with Wagga Amateur Radio Group and GRAPA theatre troupe to develop a program of interactive and creative engagement with the history of radio, focused on stories from the Riverina. This will include broadcasting new radio plays inspired by local stories and ham radio demonstrations.

## Maclean District Historical Society Inc.

### *Catching the Eye of the Passing Parade*

This project aims to raise the profile of the Maclean District Historical Society. Some problems the museum faces include being located away from the main centre of town and halfway up a steep hill to the local lookout. By putting themselves on 'display', the museum hopes to attract more of the passing parade.

## Mary Boulton Pioneer Cottage and Museum

### *Community Produce Swap Meets*

The aim of this project is to promote the cottage and museum through inspirational and interesting interactions with a diverse range of community members who would not normally visit a museum. This would be done by way of monthly produce swaps with homegrown/made products using a vibrant garden setting and signage which includes a community notice board.

## Museum of Fire

### *Aviation Exhibition*

In response to a difficult summer of fire and floods, the Museum would like to design an exhibition which highlights the efforts of firefighters during this time. Coinciding with a recent donation of a drone, we would like to begin with featuring the activities of the underrepresented FRNSW aviation team.

## New Italy Museum

### *The New Italy Heritage Trail*

The development of the New Italy Heritage Trail at New Italy, south of Woodburn (Northern NSW), would aim to deliver an immersive experience to a multicultural and cross-generational audience. A series of site-based interpreted displays with recorded oral histories available on and offsite via an app e.g. Soundtrails.

# Imagination Category

## NSW Lancers Memorial Museum Incorporated

### *Audio Guide Project*

By utilising Museum resources, this project would design and produce a visitor's audio guide to provide an alternative to guided tours. It would aim to reach a younger, technically-proficient market, and enable researchers and time poor visitors to self-guide their visit and alleviate volunteer guides during peak times.

## The Oaks Historical Society Inc

### *Hope Out Of The Ashes*

This project aims to provide a history of the local fire brigades in the context of protecting the local community and environment, including the nearby water catchment and wilderness.

## Tweed Regional Gallery & Margaret Olley Art Centre

### *Margaret Olley Children's Book*

This project aims to create a 'must-have' children's book exploring the extraordinary career, life and legacy of Margaret Olley, Australia's most celebrated painter of still life. This unique book will be creatively developed with a visual artist from our region and imaginatively designed to engage young audiences, aged 5–10 years.

## UNSW Galleries

### *The Colour Chart*

The Colour Chart is a research and public programming initiative created in collaboration with artist Léuli Eshraghi. It involves an onsite/online visualisation of curatorial decision-making in Australia, focussing on the absence of BIPOC (Black, Indigenous and People of Colour) leadership and lived experience in employment, education, acquisitions and exhibitions.

# Image Credits

## Innovation & Resilience

### *Galleries*

**03 /** **Left** BVRG at HOME online. **Top right** Pieter Hugo, *Portrait #16*, South Africa 2016 and *Portrait #7*, Rwanda Africa From the series 1994. Digital C-Print © Pieter Hugo Courtesy Yossi Milo Gallery, New York. Image by Fourth Street Studio. **Bottom right 10** *Degrees Hotter*, 2019, Paris, installation view, image by Document Photography.

**04 /** **Top** Stelly G & Sharman, *Gallery Warming*, 2019, Paris, image by Garry Trinh. **Bottom** *Mixed Business*, 2020, Paris, installation view, image by Document Photography.

**05 /** **Top left** *Object150* makers: Trade the Mark, Zara Collins, Suvikis, Hayden Youlley. **Top right** Image by David Roma. **Bottom** *Virtual InSight Kids Cre8* with Hannah Surtees.

**06 /** All photos by Vanessa Low. Courtesy Bathurst Wiradyuri Elders & M&G NSW.

**07 /** **Top left** Coffs Harbour Regional Gallery. **Top right** Sidney McMahon *'Of hope and longing'* installation view, Goulburn Regional Art Gallery, May 2020. **Bottom left** Courtesy of Griffith Regional Art Gallery. **Bottom right** Interactive installation, *'Best Before'* by Keila Terencio and Sudjuce, as part of the exhibition, *Artbomb: connect + create*. Hurstville Museum & Gallery.

**08 /** Richard Lewer with community members working on Awaba Hosue hoarding mural - opening weekend.

**09 /** **Top left** *Blacktown Arts Open Studio* with Patrice Wills. Image: The Western. **Top right** Diane and Stanley Wachman, Gallery supporters with Picasso plate, *Hunters & Collectors Fundraising Valuation Day*, Mosman Art Gallery, 2019, Tim Connolly photographer. **Bottom** Installation view we: *wiyelliko* featuring artwork by (L-R): Christian Thompson, Nicole Monks, Lin Onus and Nicole Chaffey.

**10 /** **Top left** NERAM: Aishan and her daughters, *Ezidi Women's Empowerment Program*. Photo by Simon Scott Photography. **Top right** *Winter Blooming* Drag Workshop with Zodiac and Daphne Gay. Bottom *HOMEWARD BOUND: The art and life of Tom Gleghorn*. Image still - Matterport scan virtual tour.

**11 /** **Top left** *'Regenerate'* installed at Orange Regional Museum. Courtesy of Orange Regional Gallery. **Top right** *On Stillness* images from Newcastle Art Gallery collection, MAC Museum of Art and Culture, Wollongong Art Gallery, New England Regional Art Museum, Tweed Regional Gallery, National Art School Gallery, Orange Regional Gallery. **Bottom right** Screen shot of live-streamed performance *'Getting Ready with Liam & Ramesh.'*

**12 /** **Top** Nici Cumpston, *Ringbarked II*, *Nookamka Lake*, 2011-14 edition 1/5, archival inkjet print on canvas, hand coloured with watercolours and pencils, 75 x 205cm. **Bottom** Ruby Davies, *Water as life: the town of Wilcannia and the Darling/Barka* 20 August 2007 giclee / pure pigment print, 89 x 120cm

**13 /** **Top** Jonathan Stilts - Tamworth Library Innovation Studio. **Bottom** MOAC Curator Ingrid Hedgcock filming for *Unlocking Margaret's House*. Image courtesy TRGMOAC.

**14 /** Macon Reed, *Eulogy for the Dyke Bar* 2016. Installation and programming series. Installation view, *'Friendship as a Way of Life'*, UNSW Galleries, 2020. Photo: Zan Wimberley. Installation view, *'Friendship as a Way of Life'*, UNSW Galleries, 2020. Pictured: Ella Sutherland, *Glyph, a body* 2020, pigment ink on Fabriano Rosaspina paper, powder coated steel; and Jasper Laybutt, Lisa Salmon and Kimberly O'Sullivan (eds.), *Wicked Women* magazines 1988-96. Photo: Zan Wimberley.

**15 /** **Top** Steven Oliver, host of *Faboriginal*. Photo courtesy of Noble Savage Pictures. **Middle** Still from *Together In Art* Performance by Delta Goodrem in the Art Gallery of NSW Grand Courts. Photo: Matt McGuigan/Hospital Hill. **Bottom** Still from *Together In Art Making How to make a DADA poem* with Tony Albert and Bree.

**16 /** **Top** Installation view for the 22nd Biennale of Sydney (2020), Carriageworks. Photograph: Zan Wimberley. **Bottom** Banner image of landing page for the activity *"Better together with Pip and Merindah!"*

**17 /** **Top left** Vale ni soqo village meeting house. Installation view, *Marama Dina*, Campbelltown Arts Centre 2019. Photo Document Photography. **Bottom left** Solevu. *Come together. Eat together. Speak together. Masi and SALUSALAU workshops* (detail), 2019. Campbelltown Arts Centre 2019. Photo Nancy Trieu. **Right** Images courtesy of Casula Powerhouse Arts Centre.

## *Museums*

**18 /** **Top left** Courtesy of Armidale Folk Museum. **Top right** Courtesy of Tamworth Regional Council. **Bottom** Operating Theatre-Ancillary Room, S. Pearce.

**19 /** **Top left** Griffith Pioneer Park Museum. **Top right** Aanya Whitehead Western Riverina Arts. **Bottom left** Duck Shooting on the Clarence, George Filewood, Tom Chandler, Reg Everson and Joseph Everson. Photo courtesy M. McDermid. (granddaughter of George Filewood). Photo relates to an Oral History Story.

**20 /** **Top left** Ona Janzen. **Right** Leonie Lane. **Bottom** Photo courtesy Nambucca Headland Museum.



**21 / Top** Yaegl Mosaic of dingo (“wayway”) and dolphin (“wannji”). Lesley Pickering photo of Aneika Kapeen’s design. Yaegl Cultural Garden showing main Yarning Circle with Language Poles. Lesley Pickering photo of garden design by Frances Belle Parker. **Bottom** Was the 1st Light Horse ever mounted on donkeys? NSW Lancers Memorial Museum Incorporated.

**22 / Top left** Members from the Yaegl community, Port of Yamba Historical Society and Clarence Valley Council image of new function area. **Top right** Courtesy of Prince Henry Hospital Trained Nurses Association. **Bottom** First gate rebuilt. Men’s Shed and Historical Society volunteers. Image by Ron Frew. Figures Street Rail Trail History Area. Image by Ron Frew.

**23 /** View of the former Lithgow State Coal Mine Office Building on the night of 20 December 2019. Gaspers Mountain Fire Working Bee. Image by Ray Christison.

**24 / Top** Bathurst Rail Museum - Kids Central. Image courtesy of Bathurst Regional Council. **Middle and bottom** The blue and yellow colour scheme of the medal ribbons awarded to Australians for service in the Korean War adds dramatic colour to the black-and-white portraits of Australian veterans. Publications, both printed and online, record the personal stories of the Australians who served in the Korean War 1950 – 53. Images courtesy of Anzac Memorial, Hyde Park, Sydney.

**25 / Top** *Treasures from Home*, Edilia Porcu (2019), photographer Michelle Chanique. *Treasures from Home*, Suzanne & Bounkeo Sivieng (2019), photographer Michelle Chanique. **Bottom** Bethany Holland, Collections Officer, Norfolk Island Museum.

**26 / Top left** Image courtesy of the Australian Museum. **Top right** Elysium Audiences. Australian National Maritime Museum. **Bottom** *The Object Matters* podcast, copyright Chau Chak Wing Museum.

**27 / Top left** Joy Lai, State Library of NSW. **Bottom left** The Diary Files Homepage. Designed by DX Lab. **Bottom right** Jack Meister, photograph by Katherine Griffiths.

**28 / Top left** Convict love token detail, 1825. Photograph © Penny Clay. **Top right** Photograph by Stuart Humphreys (2019) for Sydney Living Museums. **Bottom right** *ON THE MOVE* exhibition. Photograph by James Horan for Sydney Living Museums.

Inspiring Museums And Galleries in Excellence

**Museums  
& Galleries  
of NSW**



Major Supporters

**AMaGA**  
**New South Wales**

**RPGNSW**  
Regional and Public Galleries New South Wales Inc.

The IMAGInE Awards are an initiative of Museums & Galleries of NSW, developed with support from Australian Museums and Galleries Association NSW and Regional and Public Galleries of NSW. Museums & Galleries of NSW is supported by the NSW Government through Create NSW.