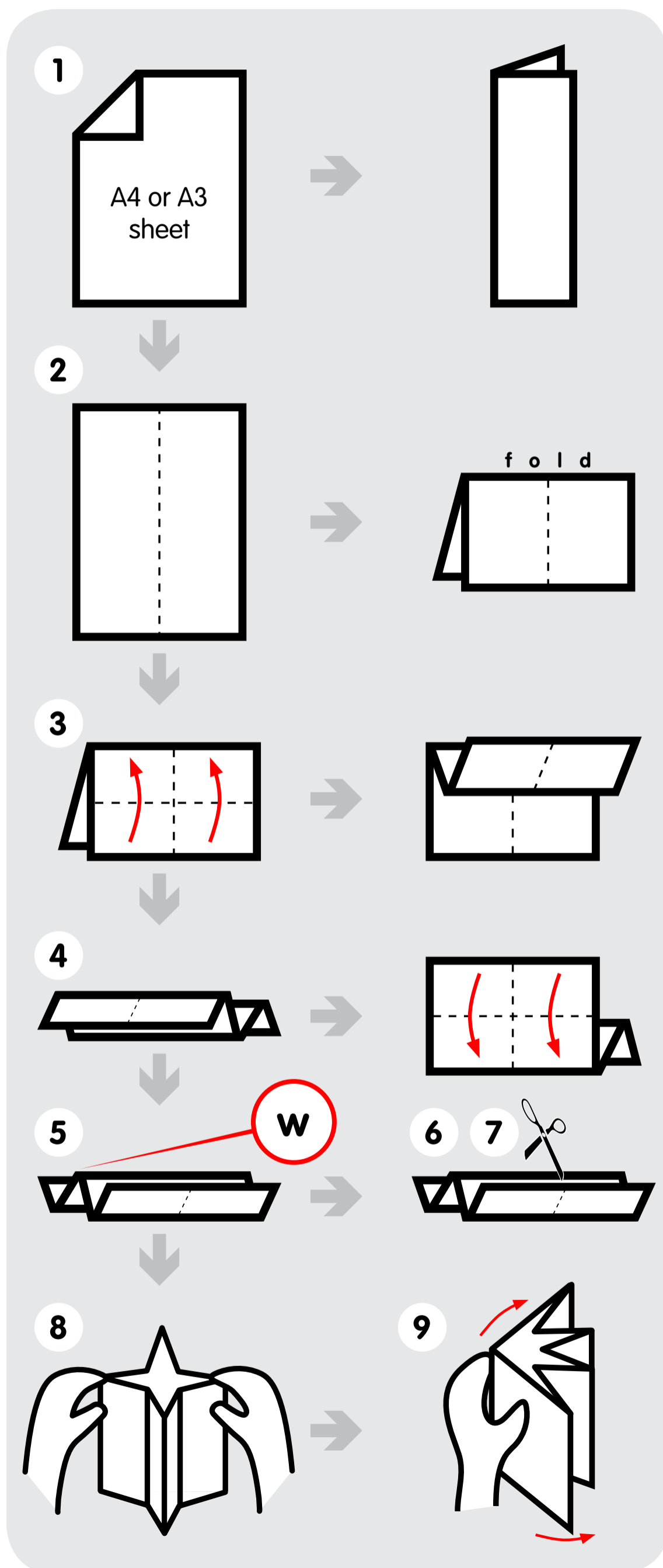


# How to Make The Book of Silhouettes and Scene Stealer\*

Use either A4 sheets or A3 for a bigger book.

- 1) Fold the paper in half the long way.
- 2) Open the paper and fold it in half the short way.
- 3) Take one layer of paper and fold the edge back to meet the fold.
- 4) Turn the paper over and fold the edge of the paper back to meet the fold.
- 5) Place the paper on the table so that you see a W when you look at the end.
- 6) Cut the paper in half along the centre fold. You'll be cutting through 2 layers of paper and stopping at the cross fold (cut along dotted line).
- 7) Hold the 2 halves on the paper from the top.
- 8) Turn your wrists to the sides. You will have an open book with four sections like a star.
- 9) Bring three of the sections together. Fold the last section on top of the other three so that you have a flat book.

\*The pattern was provided by Victoria Ryle of [www.kidsown.ie](http://www.kidsown.ie) for these instructions.



Write a poem about visiting the exhibition GREAT COLLECTIONS, starting each line with the letters 'curious':

C  
U  
R  
I  
O  
U  
S

[http://mg.nsw.org.au/news/great\\_collections/](http://mg.nsw.org.au/news/great_collections/)

Making a scene

I am ~~~~~

Scene Maker:

This is my portfolio.



Find the painting called *Kooralia* by Tim Leura Tjapaltjarri.

Tjapaltjarri is an Aboriginal man born in a place he knows as his country. He calls this place Anmatjerr or Arrente country. This country is in the middle of Australia.

*Kooralia* shows a moonbeam falling across a creek that is dry and sandy.



Draw Tjapaltjarri looking at the moon and making his painting.

Draw the Lungfish as it is caught in 1883.



Find the *Australian Lungfish*. This creature normally lives in still or slow flowing pools in Queensland. When the weather is very dry the Lungfish can come to the surface and breathe air. It can live out of water—but only for a few days.



Draw a garden for the *Maitreya* to sit in. Make her comfortable as if she were at home. Picture whether she is alone or with students.



Find the statue of the *Maitreya* (Buddha of the *Future*) made in China in 1308. The *Maitreya*'s silent and we must look for clues to what she could be thinking. One clue is the way she holds her hands as if she is a teacher.



scalp:pal along dotted line